



The Regional
STEM CONFERENCE
& Exhibition for Lincolnshire
2024

In partnership with





The Regional
STEM CONFERENCE
& Exhibition for Lincolnshire
2024

In partnership with



Welcome

PETER KENNEDY
Executive Principal and CEO

Welcome to the 5th annual regional STEM conference and exhibition. This year, we are delighted to welcome more schools and more young people to Franklin. I would like to take this opportunity to thank, in particular, the University of Hull for their support and sponsorship in bringing this event to life, in addition to our exhibitors, who are delivering workshops today.

The importance of STEM locally, regionally, and nationally cannot be overstated, and we are lucky to have some of the best and most important universities and employers collaborating with us to help young people understand the exciting opportunities available to them now and in the future. The Institute of Engineering and Technology (IET) has estimated a shortfall of over 173,000 workers in the STEM sector in the UK. With technological advancements and the green agenda, it is important to equip our young people with the necessary skills and attributes to pursue careers in STEM.

Our STEM conference and exhibition is a key feature of our year, and as a scientist myself, it is wonderful to welcome all the exhibitors, students, staff, and employers to the College and see the vast range of options explored by and available to our young people. Franklin is the ideal home for this event, a college of its community, with student performance topping the regional league tables.

We hope you take full advantage of the vast array of available workshops, ask questions, and find out about the exciting opportunities the local and wider area has to offer.

Following the STEM event, we welcome you to our annual Careers and Progression evening, where over 90 exhibitors will be available to discuss progression to university and employment and apprenticeship opportunities.





Working with key local and regional employers and stakeholders, Franklin developed their nationally recognised Centre for Professional Development (CfPD); a unique approach to brokering synergies between employer needs and the skills of talented local young people.

'One of the most innovative & successful initiatives in the college sector.'

**James Kewin, Deputy Chief Executive,
Sixth Form Colleges Association'**

CfPD has a dedicated team focused on building relationships with employers, universities and apprenticeship providers, equipping students with impartial Careers Education, Information, Advice and Guidance (CEIAG), enrichment opportunities, work experience, internships, mentoring, working lunches, employer visits and guest speakers from universities and employers.

Within the CfPD sits our Franklin Professionals Programme, which consists of several programmes specifically focused on career pathways linked to the local area.

One element of our Career Academy programme is to raise student aspirations and link them to the world of work. Students with an interest in STEM, Health & Social Care, Business & Logistics and Law can take part and benefit from a professional mentor, attend industry masterclasses & visits, and undertake an internship over the summer. Those interested in applying to medicine, veterinary science and dentistry can join our Aspiring Future Medics programme.

www.franklin.ac.uk



A word from our partner RWE



Franklin Sixth Form College is delighted to collaborate with RWE to support our students and play a pivotal role in shaping the NetZero workforce of the future. This strategic partnership will enable our students to be involved in various projects, gain an in-depth insight into the sector, network, and learn about the different careers available.

Spearheading this strategic partnership is Corrine Barry. RWE appointed its first-ever East Coast Director for Net Zero, as the UK's leading electricity generator strives to deliver its global, growing green ambitions across the Humber, Teesside, and surrounding regions.

Businesswoman Corrine Barry takes on the challenge of driving the growth of RWE's impressive local portfolio of renewable and low-carbon projects, which play a key role in ensuring a secure, domestic energy supply while delivering RWE's and the UK's net zero ambitions.

The Renewables Woman of the Year and Chair of the Humber Offshore Wind Cluster Business Environment Group has been a leading figure in the growth of the region's clean energy sector, supporting local suppliers, developing new skills, and training opportunities. In her new role, Corrine will help align RWE's green growth ambitions with those of the broader region, seeking opportunities for further renewables deployment and decarbonising the energy and industrial sectors.

Corrine Barry, RWE UK East Coast Director for Net Zero, said of the new role: "I am privileged to lead such an important initiative from RWE. With its diverse generation portfolio and its pipeline of innovative projects, RWE can provide solutions that will enable the region, to not

only decarbonise but also benefit from major local investment opportunities. These will support the creation of new jobs, help develop a new future skilled workforce, and benefit the supply chain and local communities. The UK's East Coast is emerging as a true superpower for clean and low-carbon electricity and will play a key role in the energy transition over the coming years. I'm looking forward to the challenges ahead and helping RWE play a key role across the East Coast."

RWE is one of the most influential energy companies in the powerhouse region and has an enviable portfolio of clean energy and low-carbon power projects already in development, construction, and operation. It operates its Triton Knoll and Humber Gateway offshore wind farms from its Grimsby Hub Operations & Maintenance facility, which is currently being expanded, to also accommodate the company's 1.4 gigawatts (GW) Sofia offshore wind farm. The energy company is developing two Dogger Bank South offshore wind projects, with a potential total installed capacity of 3 GW, which, could also be operated from the same facility. Onshore, RWE also operates many wind farms in the region and is developing a portfolio of solar projects at Tween Bridge and a pipeline of projects via its newly acquired JBM Solar company.

Most recently, RWE announced two major Carbon Capture and Storage (CCS) projects in the region, involving both its nearby Staythorpe gas-fired power station and a newly built gas plant with CCS to be constructed at Stallingborough, on the Humber South Bank. Both projects are central to Harbour Energy's Viking CCS project and will play a key role in the UK's future energy stability and security. In addition, RWE is also exploring further low-carbon initiatives, involving hydrogen and battery storage.

Corrine Barry

As Director of RWE's East Coast Net Zero, Corrine is responsible for delivering RWE's global, growing green ambitions across the Humber, Teesside and surrounding regions, seeking opportunities for further renewables deployment, and decarbonising the energy and industrial sectors. With a concentrated focus on driving the growth of RWE's local portfolio of renewable and low carbon projects, which play a key role in ensuring a secure, domestic energy supply while delivering RWE's and the UK's net zero ambitions.

Corrine has over 13 years of experience in the Renewables sector. As a passionate advocate for the sector with a strong focus on STEM, ensuring students from all socioeconomic backgrounds can access opportunities and experiences. Having received recognition as a leading figure for her contributions to the sector as Renewables Women of the Year & Finalist for Social Impact.

Despite academic challenges throughout her academic journey, including being told she wouldn't get the grades required to go to university and that she should stop, she defied expectations by earning her place at Hull University to study marine biology in 2005. Overcoming struggles in Mathematics with extra support, undiagnosed Dyslexia and ADHD, she graduated in 2009.

After realising her passion lay elsewhere, she delved into graphic and typographic design at the University of East Anglia. The 2008 economic crash posed challenges, leading her to a receptionist role in the oil & gas industry. Discovering her passion for people and communication, she climbed the ranks in the energy sector. She is now the East Coast NetZero Director in the UK for a major global energy player, her unconventional STEM journey proves resilience and adaptability triumph over initial setbacks.

"If you find your passion, you'll find a way."

Centre for
**Professional
Development**







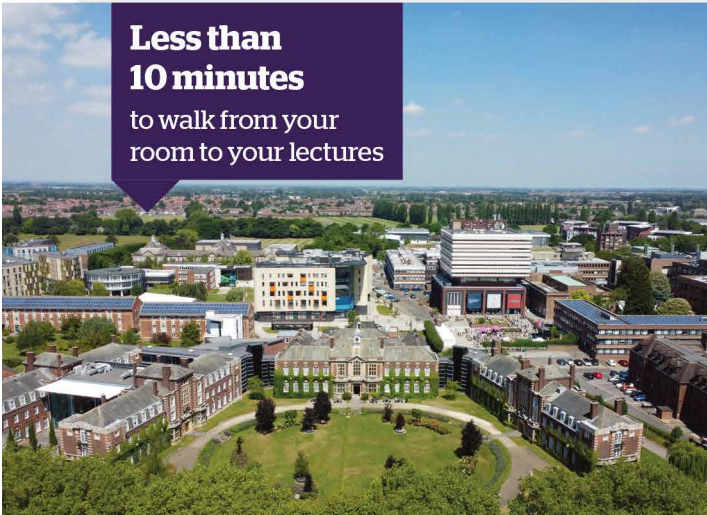
**UNIVERSITY
OF HULL**

One campus, one community

When you join Hull, you join a tight-knit community where the lecturers know your name. And everything you need to live, study and socialise is on one campus, rather than being scattered around the city. Here, see for yourself...

**Less than
10 minutes**

to walk from your
room to your lectures



**Guaranteed
University
accommodation¹**



**Most affordable
city in the UK²**



**1 jam-packed
welcome week to
help you settle in
and make friends**

**3 Costas
1 Wetherspoons
1 nightclub
1 mini-supermarket**



**80+ societies
50+ sports clubs**

7-storey library

1 million+ books, 400 PCs, rentable laptops, group work spaces, and much more



TEF
2023

Gold

TEF Gold award for
teaching excellence

95%

of Hull graduates are in work or
further study within 15 months³



£300 million

investment in facilities, with
£86 million more to come

82%

of our research is world-leading
or internationally excellent⁴



Find out more

hull.ac.uk/choose-hull

¹ All full-time, unaccompanied first-year students are guaranteed a single-person room in University-owned, managed or directed accommodation if you apply by 1 October. Please note, there is no on-campus provision for families.

² numbeo.com Europe Cost of Living Index. Correct as of September 2023.

³ UK domicile full-time first degree leavers: Higher Education Graduate Outcomes statistics, for the academic year 2020/21, published by the Higher Education Statistics Agency June 2023.

⁴ Research Excellence Framework, 2021.

Your key to a brilliant future

University is a place to feed the heart and the head. Somewhere to develop yourself personally, socially, academically. It's where you find friends for life. Where you say yes to every opportunity and do things you never dreamed of.



The University of Hull has been changing the way people think for almost 100 years. As one of England's oldest universities, we have a proud heritage of academic excellence and working to make the world a better place.

Our research makes a real difference to all our lives, and tackles some of the planet's greatest threats head on.

The University is home to research centres specialising in astrophysics and advanced materials, palliative health care and cancer treatments, estuarine and coastal environments, flood resilience, aquatic resource management and conservation. We also offer a state-of-the-art Engineering and Robotics lab and simulated hospital wards, as well as a wealth of placement opportunities within the region.



Working together

The University of Hull is proud to work in partnership with Franklin College.

We support students throughout their learning journey, aiming to enhance the curriculum with university-led projects. We give young people the chance to work alongside current university students to guide them through the university application process.

We have been key supporters of the Northeast Lincolnshire STEM Conference since its inception. We have a variety of sessions available this year, including exploring the universe with Prof. Brad Gibson. Students can also look at the mathematics of crime, learn about programming robots and find out everything you need to know about the molecular basis of cancers.

With STEM subjects, there are endless opportunities to use your skills to change lives, change your communities or even change the world. Make the most out of your day and find your extraordinary with Franklin College and the University of Hull.



Open Days & Campus Visits

Saturday 15 June 2024 | Saturday 13 July 2024

→ Plus more dates to be announced

Our doors are always open. So whoever you are, wherever you're from and wherever you want to go, we'd love to meet you. Book your visit now.

- See our beautiful single-site campus in person
- View our modern accommodation
- Get answers to all your student finance and support questions
- Chat one-to-one with our lecturers and students

Can't make it?

Visit us all year round on a Campus Visit
hull.ac.uk/visit



Scan here to book now
hull.ac.uk/opensdays

WORKSHOPS



Cosmetic Science

Do you have bath bombs, soap, and lip balms at home? Have you ever wondered how these are made? In this workshop, you'll learn the process behind cosmetic science and even get to make your own!

Games Development

What do Rust, Subnautica and Fall Guys have in common? They were all built with Unity. In our session, learn how to use Unity with a 3D kart racing game that you can modify and customise yourself! Complete the 'Creative Mods' to build on the project and make it your own, whilst learning the basics of Unity.

Social Network Analysis

Did you know that within just three connections, you're linked to every single person on the planet? Prepare to be amazed as we delve into the fascinating realm of social network analysis and discover how interconnected our world truly is! From unravelling the mysteries of networks to exploring the mesmerising world of graph theory, get ready to see your friendships, communities, and interactions in a whole new light.

Biomedical Science

Sean Frost is a clinical haematologist with a particular interest in malignancies. In this session we will explore the molecular basis of cancers and talk about what we can do to help patients.

Mathematics of Crime

In this workshop, we will see how we can use graph theory to solve a murder game. If we have time, we will have a quick discussion about how we can use this mathematics to solve/or predict where real crimes will happen.

Developing Logic Concepts Through Programming of Robots

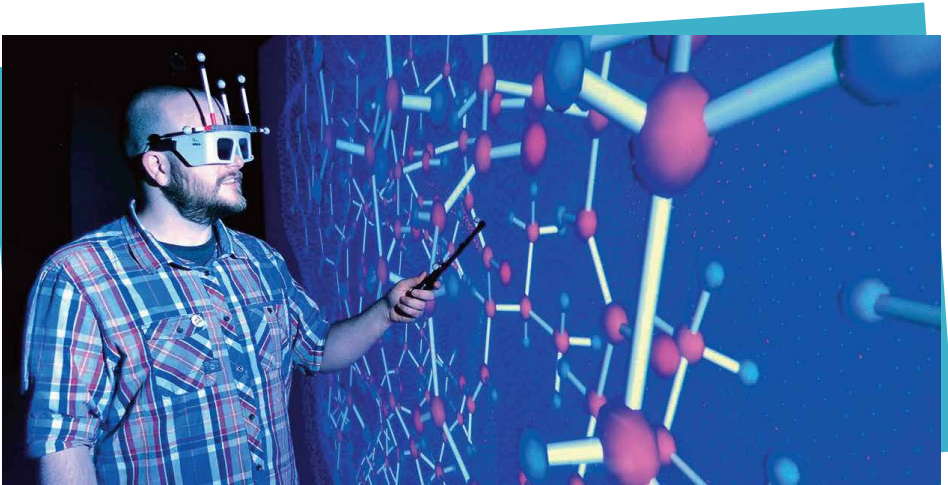
In this workshop, you will be provided with a commercial off-the-shelf (COTS) mobile robot, and a worksheet which contains a solved example and DIY tasks. You'll learn about logical concepts like conditional statements and loops!

Are We Alone in the Universe?

Have we been visited before? Are they out there watching... listening... studying us? And if they are out there, where might 'there' be? Our Milky Way Galaxy can be a nasty and inhospitable place for life to develop... but all is not lost... there are some very unique and special places hidden amongst this hostile environment where the building blocks for life might just be right for extraterrestrial life to flourish. In this interactive presentation, Professor Brad Gibson will examine the evidence for and against the existence of extraterrestrial life, and walk you through the associated good, bad, and ugly corners of our Galaxy.

Operating Department Practice

In this workshop, we'll be exploring the role of the Operating Department Practitioner and what it takes to care for patients coming for surgery. ODPs play a major role in each phase of a person's operation. Join this session to find out more!



University of Lincoln



The University of Lincoln enjoys a long history of partnership with Franklin Sixth Form College, with many of their students continuing their studies at Lincoln after completing their college course. Conveniently located on the central Brayford Campus, the University boasts specialist facilities for STEM students, at both undergraduate and postgraduate level, across the Joseph Banks Laboratories, Isaac Newton Building, Lincoln Medical School, and Janet Lane-Clayton Building. The University has a wealth of strong industry connections, providing students with invaluable experience for when they come to apply for jobs post-graduation.

The University of Lincoln is one of a select group of universities to achieve the top Gold rating overall and in both aspect ratings for student experience and student outcomes in the national Teaching Excellence Framework (TEF) 2023. We take pride in our commitment to supporting women studying STEM subjects, as evidenced by their achievement of the Bronze Award as part of the Athena SWAN Charter. All of this makes Lincoln a fantastic choice for study following your Franklin education.

Life Sciences with Professor Greg Sutton

Jumping insects provide spectacular examples of precisely manipulated speed, spin, energy and power. In the blink of an eye, jumping insects catapult themselves toward targets and away from predators. In this session, we will study the mechanics of how various insects control the muscles, joints, and even springs, that they use to fling themselves through the air.

Forensics with Professor Dan Matthews - Discover Fingerprinting

Forensic science requires skills and knowledge to work in a variety of workplace settings

including laboratories, crime scenes, and courtrooms. These enable forensic scientists to apply scientific expertise in criminal investigations. Our Forensic Science workshop aims to showcase expertise in forensic science tasks and during this workshop, you'll have the opportunity to participate in fingerprint analysis.

Escape the Lab - A Laboratory Escape Room

The Mad Professor Enigma has trapped you in a laboratory at Franklin Sixth Form College. Professor Enigma wants to test students' laboratory skills so has decided to "play a game" with the students. Professor Enigma is planning on filling the lab with a noxious gas capable of making students lose interest in their favourite hobby or pastime, so they have more time to focus on their studies! Professor Enigma will release the noxious gas if the students are incapable of proving themselves by escaping the lab. You have 30 minutes to escape.

In this activity you will be challenged at deciphering an escape code by using a wide range of laboratory equipment commonly used in university laboratories. This will expose you to the equipment commonly used in universities and a wide range of careers in the Life Sciences. You will work in teams of up to four, with a prize for the quickest escape time in each session and a prize for the best team name.

Introduction to Psychology

Through a range of fun activities, you will learn how scientific research informs us about human thoughts, behaviours and judgements. During the session, we will focus on an important and interesting area of cognitive psychology – how and why we recognise people's faces.

Bishop Grosseteste University



**BISHOP
GROSSETESTE
UNIVERSITY**

At Bishop Grosseteste University (BGU), we've been educating students in the historic heart of the city of Lincoln for over 160 years.

We've undergone an explosion of growth, expanding our portfolio into exciting new areas. We've recently introduced new courses in Mathematics, Computing and Data Science, with our state-of-the-art facilities providing hands-on learning opportunities.

But even as we've grown, our commitment to first-class education has remained consistent. We shape our methods to suit each subject area and each group of students, combining innovative techniques with the best aspects of traditional university teaching.

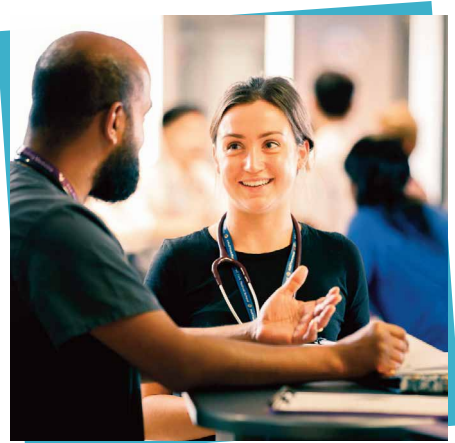
Kindness runs through everything we offer, and we're here to support our students all the way through their studies, from application to graduation.

Life after BGU is extremely important and we're really proud the employability rates of our graduates are consistently very high. We have lots of support in place to help them develop their career prospects, such as workshops and events, jobs fairs and access to a network of employers.

At BGU, your future is in safe hands.

Increasing Physical Activity Levels Via Exergaming

It is estimated that over 64% of the UK population is overweight or obese, with one in four children being overweight or obese by the age of 11. Exergaming, a combination of exercise and gaming, is a relatively new and exciting form of exercise



which may provide an alternative to 'regular' exercise, helping to combat the rising levels of obesity among children and adolescents within the UK. This session will highlight the benefits of exergaming among a range of populations with the hope of reducing sedentary behaviours.

The World of Teaching Science

An interactive session designed to give students a flavour of what it is like to teach Science and how putting it all together is more complex than they might think. Bishop Grosseteste University is renowned for teacher training and in this session, led by a Senior Lecturer from the University, students will gain an insight into the world of teaching Science to a new generation.

CATCH

We are proud to say, that we offer the most employer-focused process operations and engineering maintenance apprenticeship programme in the Yorkshire & Humber region. By utilising our industry knowledge, networks and connections and working closely with employers, we have developed specialised engineering and operations-based apprenticeship programmes ready to deliver to the next generation of industry professionals. Encompassing Mechanical, Electrical, Instrumentation, Process Operations, Welding, Pipefitting and Metal Fabrication specialisms.

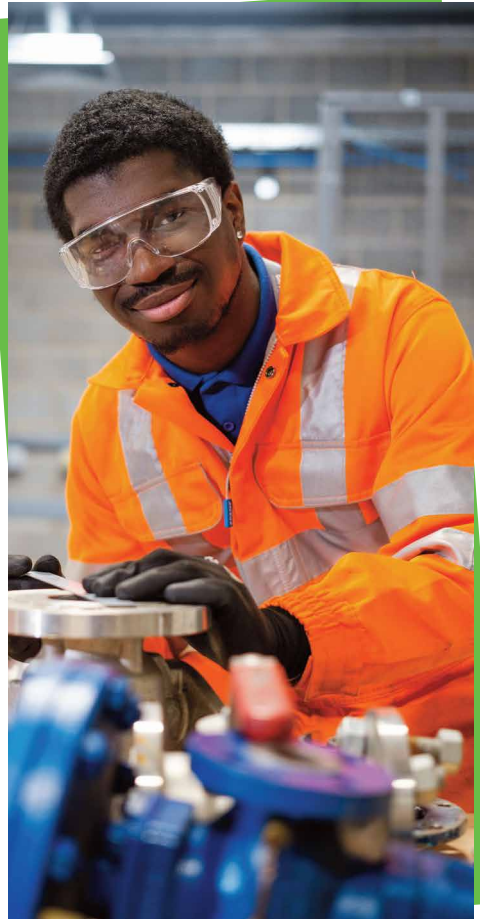
In addition to a number of engineering workshops and classrooms, our site also features the National Centre for Process & Manufacturing, the UK's leading end-to-end live process operations training plant, which includes a state-of-the-art control centre, a simulator suite, an impressive tank farm and a fully functioning process facility. We work with over 300 employers across the Yorkshire & Humber region, in sectors such as Chemicals, Oil & Gas, Cosmetics, Food & Drink, Energy and Pharmaceuticals, and its associated supply chain.

Our apprenticeships align directly with industry requirements and will provide you with a pathway to fantastic career opportunities in these exciting innovative companies.

Industry Challenge

In this session, you'll be introduced to CATCH and our apprenticeships, an overview of our engineering apprenticeships and organisations we work with. You will take part in STEM based activities which will require teamwork and using skills such as leadership, problem solving, logistics and practical building.

CATCH



SRC UK

SRC UK are a data solutions company, offering data analytics, software development and consultancy alongside specialised radar servicing and Intelligence Mission Data tool training. Based in Lincoln, SRC UK has a wide customer base across the UK in a range of industries from defence to finance. With a not-for-profit ethos, SRC UK has a strong focus on social values and has a range of benefits and job opportunities for all levels of experience across it's specialisms.

Data Analysis and Crypto

In this workshop, you'll take part in two short (but tricky!) team exercises to show how analysis of given data is important and diverse, and a cryptography exercise to solve!



**BESPOKE DATA SOLUTION
SPECIALISTS**

Quickline

QUICKLINE

Broadband for the better.

We connect rural communities to fast, reliable broadband. Great internet connection shouldn't be a postcode lottery. It should be for everyone, everywhere. We're also passionate about delivering social value to the communities we serve. This includes inspiring future talent, delivering school activities with meaningful impact and encouraging our team to use their volunteer days.

Day in the Life of an Installer Engineer for Broadband

During this practical demonstration, you'll go outside to our branded van. Here, our engineer will showcase the tools required for carrying out installations. Additionally, we will incorporate a few informative videos focusing on the splicing of cables to enhance your learning experience.



Safer Roads Humber

Safer
Roads
Humber

Safer Roads Humber aims for all road users to be safe on the region's roads. We provide courses on driver safety and publish information on our engagement activities and daily enforcement schedule, road casualty data and general advice for road users.

How STEM can help reduce RTA's

In this workshop you'll learn about what Humberside Fire and Rescue do and how STEM can assist in the reduction of road traffic collisions and reduce injuries.



Orsted

Orsted is a renewable energy company that takes real action to fight climate change in the UK and all over the world and are most well known for being the global leader in offshore wind.

The East Coast Hub, on the Port of Grimsby, operates six offshore wind farms including the world's largest – Hornsea 2 – officially named the 'world's largest offshore wind farm by capacity' in the Guinness Book of World Records. There are over 130 different roles based out of the Hub, from engineers to offshore coordinators, environmental specialists to media managers, health and safety managers to project coordinators. Your job role could be onshore or offshore or a mixture of both with opportunities to work hybrid from home. Your career could take you down many different pathways right on your doorstep and apprenticeship opportunities are available from age 16+.

Orsted

Building a Wind Farm

What does it take to build a wind farm? We'd love to see you take on the challenge! You'll be given materials, a budget and a countdown to see if you can work together to complete the brief. Who knows what challenges will come up on the way? A storm in the middle of the North Sea or a tight budget with ever changing prices? This challenge will test your teamwork and initiative.





RWE is the leading power producer in the UK, supplying around 15% of all electricity in the country, generating enough power to supply around 14m homes. We have ambitions to invest up to £15bn up to 2030 in developing clean energy projects in the UK to support the energy transition, creating high-quality jobs across the length and breadth of the country.

Why is it so important to reduce our carbon footprint?

During this session, we will run experiments using dry ice which look at the chemical and physical properties of carbon dioxide. These experiments really highlight why it's important to reduce our carbon footprint. The workshop will also teach you about the renewables industry - you'll learn why the industry is so important! Members of the team will be available to talk about renewables and even discuss our apprenticeship scheme.



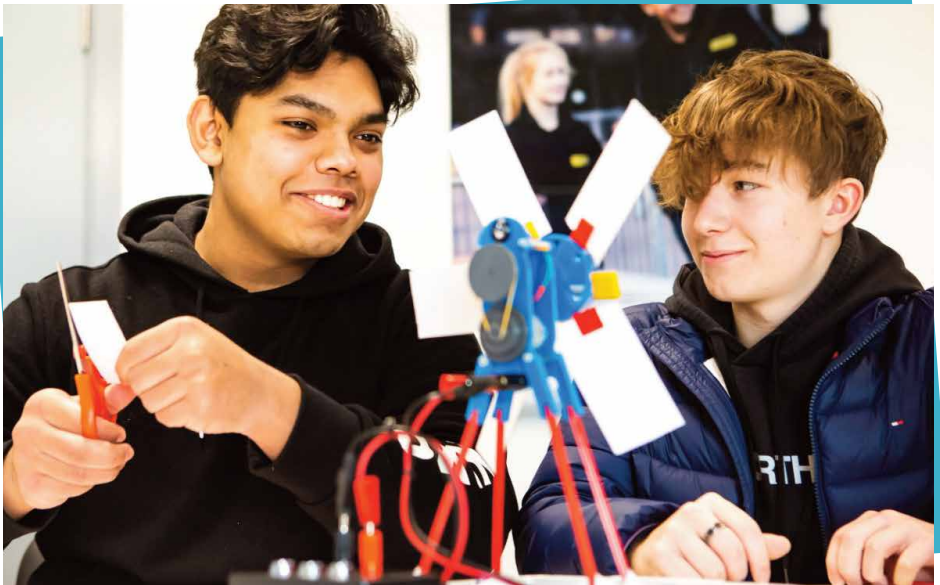
UKSTEM develops and delivers high-quality educational consultancy and resources that inspire young people and foster understanding. Led by Mike Cargill the company has developed since setting up in 2015 and works closely with several universities, private clients, and local authorities both throughout the UK and beyond.

At UKSTEM we pride ourselves on staying ahead of the competition by setting a high bar for educational engagement.



Supergrid Challenge

Be the most competitive energy supplier in the Supergrid challenge. In this part simulation part practical STEM based business game you'll be tasked with finding the best blade number/size/angle/shape combo that optimises your output and allows you to win by slashing your energy prices!



ORE Catapult

CATAPULT
Offshore Renewable Energy



ORE Catapult is the UK's leading innovation centre for offshore renewable energy. Independent and trusted, with a unique combination of world-leading test and demonstration facilities and engineering and research expertise, ORE Catapult convenes the sector to deliver applied research, accelerate technology development, reduce risk, and cost, and enhance UK-wide economic growth. Our unique research and engineering capabilities bring industry and academia together to drive innovation and reduce costs from offshore renewable energy.

We support the UK's research and innovation community through our testing, validation, and engineering expertise to accelerate the commercialisation of the latest technologies and disruptive innovations.

EXPLORE

In this workshop, you'll learn about ORE Catapult and solve an offshore wind challenge: come up with an idea and decide how you will prove that it's safe, makes a difference and something people should invest in.

Phillips 66 Humber Refinery



“Providing Energy and Improving Lives”

We make essential products used every day throughout the world manufacturing raw materials and feedstocks used in everything from electric vehicle (EV) batteries to toiletries with an ambition to build a thriving, lower carbon business platform by leveraging existing capabilities and advancing investments in new energy technologies. Today, the refinery produces lower carbon road fuels and is the UK’s only refinery to supply sustainable aviation fuel at scale. Additionally, as part of its transition to The Refinery of the Future, the refinery is also exploring carbon capture and hydrogen refueling.

At the Humber refinery we are dedicated to fostering the growth and development of future energy leaders. Our training and developmental programs are designed to empower students, apprentices, and graduates, equipping them with opportunities that foster personal and professional growth.

The Phillips 66 Humber Refinery has people at its heart, we have an onsite gym and host a number of sporting clubs including football, circuit training and clubbercise. We have employee led networks including our Early Careers Network, Women’s Network, I&D Network, and a strong Allyship Programme, as well as many opportunities for external volunteering sharing our Good Energy

Fuel Cells Technology

Meet some of the Phillips 66 team and discover some of the hundreds of products we all use every day that rely on our industry and why it is important for us to find lower carbon ways of doing what we do as well as learn about our careers and apprenticeships.

Our decarbonisation journey requires great people working for us, with skills including leadership, communication, teamwork, creative thinking and diversity of thought. Get hands-on with our Fuel Cells Technology Activity, where you can get hands-on and make a battery and a hydrogen fuel cell!

Humberside Fire and Rescue



HUMBERSIDE
Fire & Rescue Service

Humberside Fire and Rescue Service believes the most effective way to save lives, reduce injuries and other losses through fire and other emergencies is to reduce the number of incidents that occur. To help us achieve this our local Prevention and Protection teams work closely with partner organisations and our communities on initiatives to prevent incidents.

Fire Safety 101

Our workshop will endeavour to equip students with the knowledge to reduce the risk of fire in their homes and equip them with actions to take should a fire develop.





We are proud to welcome our partner schools:

Somercotes Academy



Somercotes Academy

Somercotes Academy is a small rural school based in North Somercotes, we have just under 500 students on role of all abilities.

John Spendluffe Technology College



JSTC JOHN SPENDLUFFE
TECHNOLOGY COLLEGE
ALFORD

JSTC is a non-selective 11-16 co-educational school in a selective area. We are a popular, over-subscribed school of around 640 students. We are proud of the work that we do with our young people to enable them to challenge themselves academically and reach the highest of aspirations.

At our most recent Ofsted inspection we were rated as Good in all categories. As a school, we continue to develop our already broad curriculum offer to students to ensure that our students have the highest quality of education, experiences, and opportunities. We are a single academy trust but have developed strong networks and links with a range of partners and other schools locally and throughout the county.

Waltham Toll Bar Academy



Waltham Toll Bar Academy

Waltham Toll Bar Academy is one of the largest schools in the Grimsby area under the Lincolnshire Gateway Academy Trust.

The school's aims and visions are to celebrate our students by guiding them in embracing every opportunity to ignite their curiosity, giving them the tools to engage in and enjoy learning to achieve excellence.

John Whitgift Academy

John Whitgift Academy is a highly successful, rapidly growing secondary school which serves the Willows and Wybers communities in Grimsby, North East Lincolnshire. From September 2023, we will have over 1000 students on roll with at least another 240 new Year 7 students joining us in September 2024.

In the summer of 2023, John Whitgift Academy was the only Academy in North East Lincolnshire to achieve a positive Progress 8 score (+0.15.) The Academy has excellent results across all subject areas, particularly in Science, Maths and English and was rated as Good by Ofsted in January 2020.



In addition to excellent teaching and facilities, students are offered many additional STEM activities throughout the academic year, both during curriculum time and at the end of the academy day. We have thriving clubs for STEM and LEGO robotics. The Academy is also building many links with local businesses, employers, and universities across the country to help raise both the profile of careers in STEM industries and the aspirations of students to follow STEM-related subjects when they leave at the end of year 11.

John Whitgift Academy students are very much looking forward to participating in the STEM conference and exhibition at Franklin Sixth Form College and many of them aspire to study STEM - related subjects at Franklin College in the future.



Cleethorpes Academy

Cleethorpes Academy is an 11 – 16 secondary school with 900 students on roll. On our last OFSTED report the Academy was rated good in all categories. Cleethorpes Academy is committed to providing a quality education for its students. The care and guidance we provide for our students creates a positive climate for each individual to grow and develop.



Our aim is to make Cleethorpes Academy an outstanding and successful school which serves the young people of Cleethorpes well into the millennium. We are a member of a locally based Multi Academy Trust with local knowledge in a growing family of mutually supportive neighbouring Academies.

Oasis Academy Wintringham



Oasis Academy Wintringham is part of a large multi-academy trust, Oasis Community Learning, which has 52 academies across England. We work together with a broad national team to ensure that our students receive an excellent education. This is underpinned by our belief in the 3Cs: character, competence, and community, which drive our curriculum. We are proud to serve the people of Grimsby and pride ourselves on our inclusivity; this sits at the heart of our core beliefs.

Our vision is that all of our students will have the opportunity to climb the stairway to university, or a real alternative, and lead a fulfilling and happy life.

Relationships are at the heart of all that we do as an academy, and we believe that the development of student character is of equal significance to that of their academic education.

Our extra-curricular offer, CEIAG provision, personal development curriculum and the benefits of our Leisure Club offer exemplify this; you will find more details on our website, so please take a look!

www.oasisacademywintringham.org

St James

St. James' is a small Independent Day and Boarding School offering a personalised approach to learning for children aged 11 to 18. Our ethos is to focus on the individual pupil and their emotional and social needs just as much as their academic progress. Ensuring that pupils are happy, feel safe and supported is at the forefront of our aims and objectives, and the academic results will naturally follow.



Louth Academy

Louth Academy is an 11-16 Academy based in Louth, Lincolnshire. Louth Academy students enjoy an ambitious, broad and balanced curriculum which prepares them for adult life. Our curriculum is designed to be flexible to allow for personalised learning.



Lincolnshire Gateway
Academies Trust

Our curriculum is not confined to the classroom, and students are given outstanding enrichment to aid their educational experience. The academic results will naturally follow.

Healing Academy

Healing Academy is one of the highest-performing schools in this region. Success and Happiness for every child is of the utmost importance to us as a school, and we are extremely proud to work with a dedicated team to provide the best education and life skills for children in our care.

We believe that every child has talent and can experience success as they develop into young, happy adults through the supportive and caring environment we provide. We cultivate a culture of there being no limits to what a child can achieve as they deserve the absolute best.



HEALING ACADEMY

Success and happiness for every child

Our Academy is first and foremost, a place of learning where students feel safe and enjoy their educational journey. Learning is at the centre of everything we do both in (taught curriculum), and out of the classroom (co-curriculum) and with so many enrichment opportunities, we feel every child will flourish here with us.



Caistor Yarborough Academy

Caistor Yarborough Academy enjoys a fabulous setting with views across the beautiful Lincolnshire Wolds. The school provides a personalised and inclusive learning environment which nurtures and values every student through an ethos of 'Excellence for All.'

A key strength of the Academy is the feeling of inclusion, community, and support together with academic success. Everyone is valued as an individual, giving students the confidence to develop a thirst for knowledge in pursuit of their aspirations to be the best they can be.



CAISTOR YARBOROUGH ACADEMY

These aspirations are supported by a curriculum designed to be relevant to today's world, which prepares students for the next stage whether it be further study, apprenticeships, or the world of work. Students speak positively about the Academy and their experiences, appreciating the way they are challenged and supported with clear visions and strategies for how to succeed.

Humberston Academy

Humberston Academy is an outstanding academy proud of our exceptionally high standards and traditional ethos. We offer a diverse enrichment programme in order to develop skills outside of the classroom and support students to thrive beyond Humberston.



The Academy Grimsby

The Academy Grimsby is a route to college, university or employment for young people aged 14-16 years, focusing on providing high-quality GCSE tuition alongside specialised professional and technical areas of study.

Our vocational areas of Engineering, Health Care, Creative, Digital & Games, Hair &

The Academy Grimsby

Beauty and Animal Care have been chosen to reflect industry employment trends and the need for communication and social skills in the workplace. Our teaching and work experience is heavily supported by industry, giving our students a head start in a great career.

Ormiston Maritime Academy

Achieve. Support. Persevere. Independence. Respect. Engage. These are our Academy values which, were developed by our students. At OMA, our vision is very simple: all students, irrespective of their



backgrounds, will be exceptional learners, so they are equipped with the necessary knowledge, skills, qualifications, and mindset to contribute positively in society.

Beacon Academy



We are an exciting, expanding, inclusive and dynamic secondary Academy which places the student at the heart of our provision. Our distinctive ethos of 'Human Scale Education' sets us apart from other schools.

At Beacon Academy, your child will be known as an individual, supported, and provided with opportunities to achieve academically and to develop as a young person.

Within our distinctive ethos, we provide children with opportunities and interventions and watch them thrive.

We will continue to build upon solid foundations as an academy rated 'Good' by OFSTED. Regional champions in sports, poetry, photography and performing arts are just some examples of how your child will develop those crucial 'soft skills' needed to flourish in an ever-changing world.



Baysgarth School



Baysgarth School was founded in 1975 and has proudly been serving the communities of Barton-upon-Humber and the surrounding villages for almost half a century. Over the past eight years, Baysgarth has undergone a complete transformation, progressing from the second worst results in the Local Authority in 2014, to one of the top schools in the Humber region, consistently performing in the top 5% of schools nationally.

Our staff are phenomenal; they are dedicated, passionate, dynamic, caring and inspiring. Everyone within the Baysgarth team strives every day to bring the best out in each of our students and offer the support and guidance to prepare them for life-long success.

With over £1 million of investment, Baysgarth boasts state-of-the-art classrooms, fantastic IT facilities, an unrivalled on-site Sports Village, including a skate park and dance studio, along with our Headway Alternative Provision. We continually look to enhance our broad and balanced curriculum to support the best outcomes and prepare this community's young people for their next steps and beyond.

For more information about our CfPD or STEM courses at Franklin please contact...

Franklin Sixth Form College

Chelmsford Avenue, Grimsby,
North East Lincolnshire DN34 5BY

T. **01472 875 000** | E. **admissions@franklin.ac.uk**

www.franklin.ac.uk



@FranklinGrimsby

#SEEYOURFUTURE

Supported by



**Waltham Toll Bar
Academy**



Somercotes Academy



JSTC
JOHN SPENCER COLLEGE
ALFORD